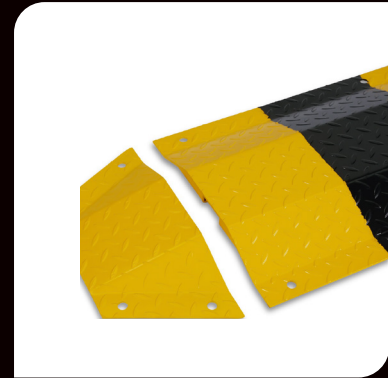


Metal Speed Hump End Cap



Description:

The Metal Speed Hump – End Cap is a tapered finishing component designed to be used in conjunction with metal speed hump middle sections. Made from galvanized steel, this end cap ensures a smooth transition for vehicles, preventing sharp edges and reducing trip hazards. It contributes to the complete assembly of modular speed humps in areas requiring durable, long-term traffic calming solutions.

Features:

- **Tapered Design:** Provides a smooth, angled edge for safe vehicle entry and exit, reducing wear on tyres and suspension.
- **Durable Material:** Manufactured from high-strength galvanized steel for superior impact and weather resistance.
- **Modular Fit:** Designed to integrate seamlessly with metal speed hump middle sections to form a full-length speed hump system.
- **Anti-Corrosive:** Galvanized coating protects against rust, making it ideal for both indoor and outdoor environments.
- **Non-Slip Surface:** Often features a textured or patterned surface to reduce skidding in wet or oily conditions.

Easy Installation: Comes with pre-drilled holes for secure and hassle-free mounting on concrete or asphalt surfaces.

Uses:

- Used at both ends of a modular metal speed hump setup in car parks, industrial areas, or loading bays

Specifications:

Material	Length	Height	Width	Weight	Finish	Mounting
Galvanized steel	200 mm	50 mm	485 mm	9.00 kg	Anti-corrosive coating (commonly silver/grey)	Pre-drilled holes for secure fixing