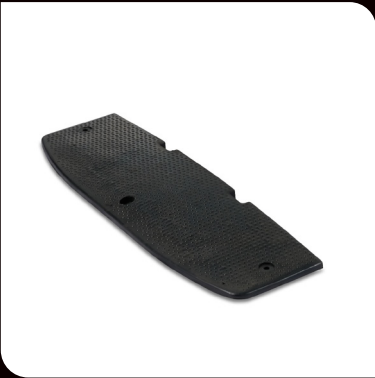


Speed Cushion

End Caps



Description:

The Speed Cushion – End Caps are essential components of a modular speed cushion system, designed to provide a tapered finish to the middle sections. These end caps ensure smooth transition for vehicles while maintaining effective speed reduction. Ideal for roads, car parks, and traffic-calmed zones, they are constructed from durable rubber for long-term performance and safety.

Features:

- **Modular Integration:** Specifically designed to pair with middle sections of speed cushions to create a full-width solution.
- **Tapered Edges:** Facilitates smoother entry and exit for vehicles, minimizing impact while maintaining speed control.
- **Durable Material:** Manufactured from heavy-duty recycled rubber, offering resistance to wear, weather, oil, and UV rays.
- **Highly Visible:** May include contrasting colours or reflective elements for better visibility in low-light conditions.
- **Low Maintenance:** Long-lasting material that requires minimal upkeep over time. Quick Installation: Pre-drilled holes for straightforward mounting on asphalt or concrete surfaces.

Uses:

- Used in conjunction with middle sections to complete modular speed cushion setups

Specifications:

Material	Length	Height	Width	Weight	Colour	Mounting
Recycled rubber	250 mm	50 mm	900 mm	16.35 kg	Typically black (may include yellow or reflective markings)	Pre-drilled fixing holes (bolts may be sold separately)